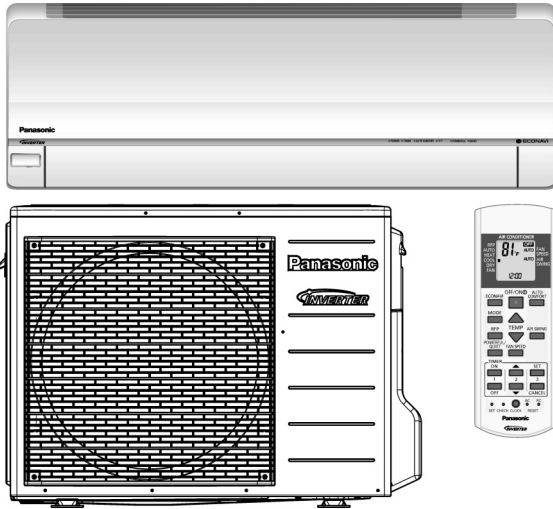


Service Manual

Air Conditioner



Indoor Unit
CS-XE9PKUA
CS-XE12PKUA


Outdoor Unit
CU-XE9PKUA
CU-XE12PKUA

Destination
U.S.A.
Canada

WARNING

This service information is designed for experienced repair technicians only and is not designed for use by the general public. It does not contain warnings or cautions to advise non-technical individuals of potential dangers in attempting to service a product. Products powered by electricity should be serviced or repaired only by experienced professional technicians. Any attempt to service or repair the products dealt with in this service information by anyone else could result in serious injury or death.

IMPORTANT SAFETY NOTICE

There are special components used in this equipment which are important for safety. These parts are marked by  in the Schematic Diagrams, Circuit Board Diagrams, Exploded Views and Replacement Parts List. It is essential that these critical parts should be replaced with manufacturer's specified parts to prevent shock, fire or other hazards. Do not modify the original design without permission of manufacturer.



PRECAUTION OF LOW TEMPERATURE

In order to avoid frostbite, be assured of no refrigerant leakage during the installation or repairing of refrigerant circuit.

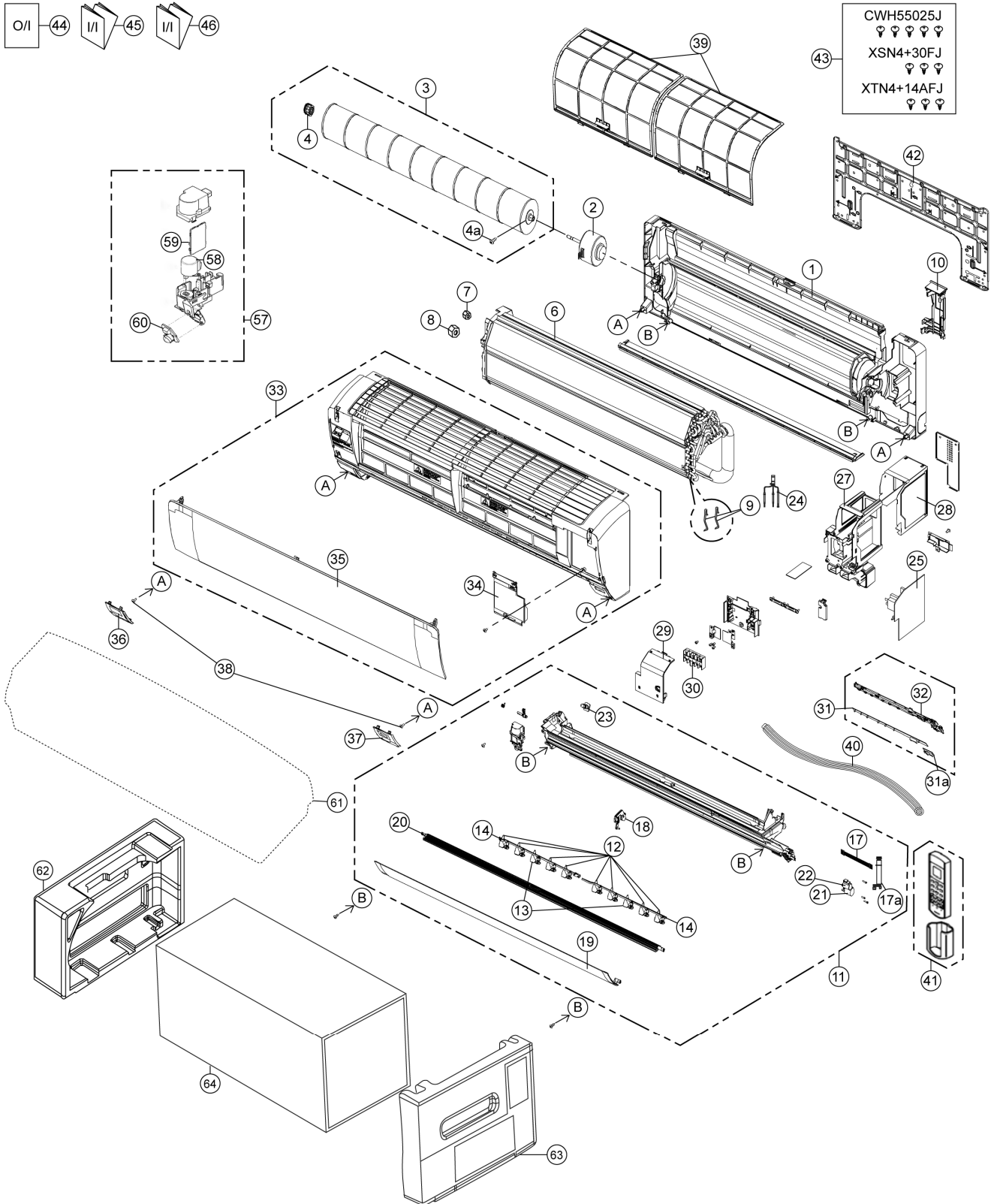
Panasonic®

© Panasonic Corporation 2013.

18. Exploded View and Replacement Parts List

18.1 Indoor Unit

18.1.1 CS-XE9PKUA CS-XE12PKUA



SAFETY	REF. NO.	PART NAME & DESCRIPTION	QTY.	CS-XE9PKUA	CS-XE12PKUA	REMARK
	1	CHASSIS COMPLETE	1	CWD50C1730	←	
⚠	2	FAN MOTOR	1	ARW7715AC	←	O
	3	CROSS - FLOW FAN COMPLETE	1	CWH02C1137	←	
	4	BEARING ASSY	1	CWH64K1010	←	O
	4a	SCREW – CROSS - FLOW FAN	1	CWH551146	←	
	6	EVAPORATOR	1	CWB30C4585	CWB30C4588	
	7	FLARE NUT (LIQUID)	1	CWT251030	←	
	8	FLARE NUT (GAS)	1	CWT251031	CWT251032	
	9	CLIP FOR SENSOR	2	CWH711019	←	
	10	BACK COVER CHASSIS	1	CWD933463	←	
	11	DISCHARGE GRILLE COMPLETE	1	CWE20C3419	←	
	12	VERTICAL VANE	8	CWE241389	←	
	13	VERTICAL VANE	2	CWE241409	←	
	14	CONNECTING BAR	2	CWE261272	←	
	17	LEAD WIRE - COMPLETE	1	CWA68C0784	←	O
	17a	LEAD WIRE - COMPLETE	1	CWA68C0786	←	O
	18	FULCRUM	1	CWH621157	←	
	19	HORIZONTAL VANE COMPLETE	1	CWE24C1422	←	
	20	HORIZONTAL VANE COMPLETE	1	CWE24C1421	←	
⚠	21	AIR SWING MOTOR	1	CWA981241	←	O
⚠	22	AIR SWING MOTOR	1	CWA981299	←	O
	23	CAP - DRAIN TRAY	1	CWH521259	←	
	24	SENSOR COMPLETE	1	CWA50C2800	←	
⚠	25	ELECTRONIC CONTROLLER - MAIN	1	CWA73C7809	CWA73C7810	O
	27	CONTROL BOARD CASING	1	CWH102564A	←	
	28	CONTROL BOARD TOP COVER	1	CWH131531	←	
	29	CONTROL BOARD FRONT COVER CO.	1	CWH13C1309	←	
⚠	30	TERMINAL BOARD COMPLETE	1	CWA28C2616	←	
⚠	31	ELECTRONIC CONTROLLER - INDICATOR	1	CWA747457	←	O
⚠	31a	ELECTRONIC CONTROLLER - RECEIVER	1	CWA747456	←	O
	32	INDICATOR HOLDER	1	CWD933466	←	
	33	FRONT GRILLE COMPLETE	1	CWE11C5689	←	O
	34	GRILLE DOOR COMPLETE	1	CWE14C1099	←	
	35	INTAKE GRILLE COMPLETE	1	CWE22K1610	←	
	36	DECORATION BASE (LEFT)	1	CWE35K1166	←	
	37	DECORATION BASE (RIGHT)	1	CWE351326	←	
	38	SCREW - FRONT GRILLE	2	XTT4+16CFJ	←	
	39	AIR FILTER	2	CWD001326	←	O
	40	DRAIN HOSE	1	CWH851173	←	
	41	REMOTE CONTROL COMPLETE	1	CWA75C4246	←	O
	42	INSTALLATION PLATE	1	CWH361134	←	
	43	BAG COMPLETE - INSTALLATION SCREW	1	CWH82C1705	←	
	44	OPERATING INSTRUCTION	1	CWF569182	←	
	45	INSTALLATION INSTRUCTION	1	CWF615968	←	
	46	INSTALLATION INSTRUCTION	1	CWF615977	←	
	57	SENSOR COMPLETE (ECO)	1	CWA50C3005	←	
⚠	58	AIR SWING MOTOR (ECO)	1	CWA981298	←	O
⚠	59	ELECTRONIC CONTROLLER	1	CWA746917	←	O
⚠	60	ELECTRONIC CONTROLLER	1	CWA747279	←	O

SAFETY	REF. NO.	PART NAME & DESCRIPTION	QTY.	CS-XE9PKUA	CS-XE12PKUA	REMARK
	61	BAG	1	CWG861515	←	
	62	SHOCK ABSORBER (L)	1	CWG713484	←	
	63	SHOCK ABSORBER (R)	1	CWG713485	←	
	64	C.C.CASE	1	CWG568509	←	

(NOTE)

- All parts are supplied from PAPAMY, Malaysia (Vendor Code: 00029488).
- “O” marked parts are recommended to be kept in stock.